

Schneider Electric Training



EcoStruxure™ Power Operation (EPO)

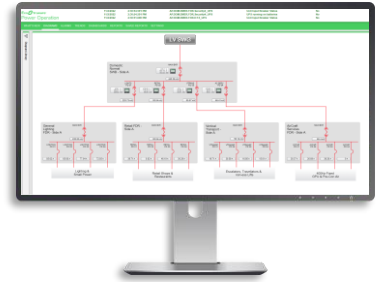
- Administration & Maintenance – (1-Day)

Description:

This 1-Day instructor led course focuses on teaching students to manage and maintain their EcoStruxure™ Power Operation (EPO) system to best meet their needs. Students will follow along in their own system as the instructor provides an overview of the hardware and software components running EPO. They will learn how to backup and restore projects, add users, manage device communications, and edit diagrams. They will also learn how to manage separate device communications and plan for disaster recovery.

Audience:

This course is designed for anyone who is responsible for administering, maintaining, and/or supporting an EPO system, such as system administrators (and possibly IT Admins), as well as advanced EPO users.



Course Details

Duration:

- 1-Days

Delivery Type:

- Onsite Classroom (CR)
- Virtual Instructor Led (VILT)

Course Reference #:

- 3000EPO1DADMIN500

Product Numbers:

- Reference Table A

Registration

- Contact pmu@se.com to begin this process.

Prerequisites:

- A basic familiarity with using EPO
- A reasonable understanding of Microsoft Windows operating systems
- A basic working knowledge of power and energy will be helpful

Students will be provided:

- request only
- Demo software or equipment is not included but can be requested for purchase during the quotation process

Objectives:

After completion of this training course, participants will be able to:

- Understand the architecture and workflow of an EPO project
- Backup and restore a project
- Modify device communications
- Edit diagrams
- Modify communications in Advanced Reports
- Change database backup timing and location

se.com

Life Is On

Schneider
Electric

EcoStruxure™ Power Operation (EPO)

- Administration & Maintenance – (1-Day)

1-Day Agenda

- System Architecture
- Project Management
- Communications
- Diagrams
- Advanced Reports Devices
- Database Backups

Onsite Part Number Reference Table

The following part numbers can be used for **On-Site** Customer Dedicated training events. Contact PMU@se.com for any custom quote request, including Virtual events or custom agendas.

| SE Part Number | Description |
|------------------|---------------------------------------------------------------------------------------------------------------------------|
| 3000PMUSITE1C | 1 Instructor for 1 day, up to 10 students (no minimum required), no change to agenda, Standard Business Hours (SBH) |
| 3000PMUSITE1CVF | 1 Instructor for 1 day, up to 10 students (no minimum required), no change to agenda, SBH, with Videography Service (VS). |
| 3000PMUCSITEPREP | 1 day of Instructor prep time for custom content requests. Qty as needed. |
| 3000PMUCSITE | Used to cover cost of second instructor for classes with 11-20 students. |

Use the following part numbers for multi-day Onsite events.

| | |
|-----------------|----------------------------------------------------------------------------------------|
| 3000PMUSITE2C | 1 Instructor for 2 days, up to 10 students (no min), no change to agenda, SBH |
| 3000PMUSITE2CVF | 1 Instructor for 2 days, up to 10 students (no min), no change to agenda, SBH, with VS |
| 3000PMUSITE3C | 1 Instructor for 3 days, up to 10 students (no min), no change to agenda, SBH |
| 3000PMUSITE3CVF | 1 Instructor for 3 days, up to 10 students (no min), no change to agenda, SBH, with VS |
| 3000PMUSITE4C | 1 Instructor for 4 days, up to 10 students (no min), no change to agenda, SBH |
| 3000PMUSITE4CVF | 1 Instructor for 4 days, up to 10 students (no min), no change to agenda, SBH, with VS |

se.com

Life Is On

Schneider
Electric